

Big features, little details

Most families that rent would want a bit more room to move around in. They get it at Hunters Run. Airy rooms, huge kitchens with plenty of dining area and more cabinet space than you can imagine. Back doors that open to yards and patios with attached storage. Soundproof design and construction techniques that let you read or entertain to your heart's content.

But often it's the little things that make the difference. At Hunters Run you'll notice the deep carpeting, sturdy brass door knobs, quality windows, no-frost freezers and tough, no-wax floors. The latest energy-efficient features are built in to save you money and conserve energy.

Features

- Private entry front and back
- Large kitchen with dining area, pantry and appliances featuring:
 - Frost-free refrigerator
 - Self-cleaning oven
 - Power ventilated range hood
 - Built-in dishwasher
 - Garbage disposal
- Utility room with washer/dryer hook-up
- Two full baths or 2½ baths
- Master bedroom with full bath & generous closet space
- Private patio with enclosed, attached storage
- Wall-to-wall carpeting
- Thermal pane, thermal break windows with miniblinds
- Central air
- Efficient gas heat system
- Wired for cable TV and telephone
- Energy efficient features throughout
- Handicap access and features available

About the Builder and Management

Hunters Run is built and professionally managed by Towne Properties. Towne enjoys a 45-year reputation for building and managing high quality residential and commercial properties.

Below-market rents for Hunters Run are made possible through a new program offered by Towne Properties. Certain income qualifications apply.



**HUNTERS
RUN**



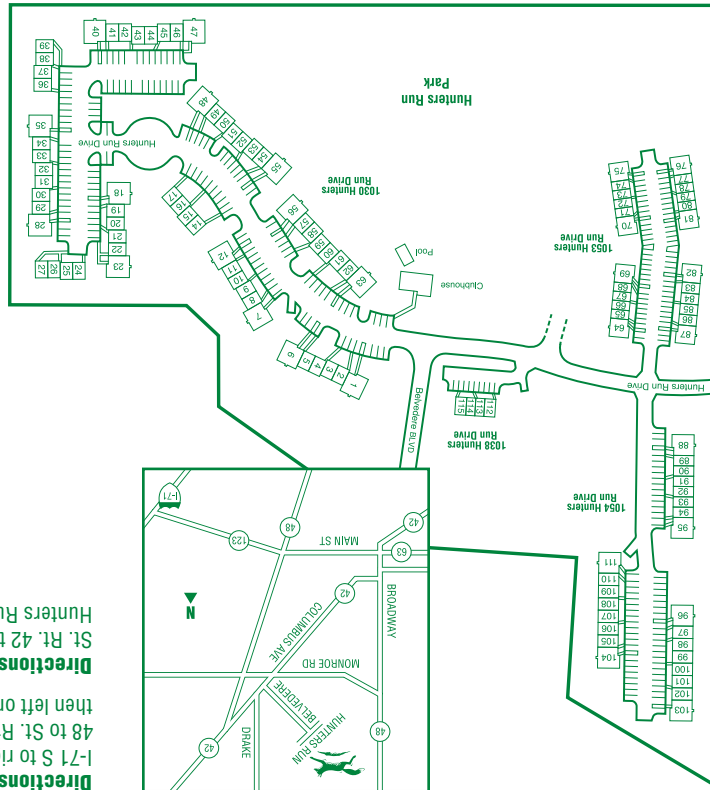
1030 Hunters Run Drive
Lebanon, Ohio 45036
tel/ 513 933 8335
fax 513 933 8337
www.huntersrunapts.com
Professionally managed by
Towne Properties

**HUNTERS
RUN**



Directions from North
I-71 S to right on St. Rt. 48. Follow St. Rt. 48 to St. Rt. 42, turn left (south). Take second right to Belvedere then left on Hunters Run Drive. Clubhouse is on the right.

Directions from South
St. Rt. 42 through Lebanon to Belvedere, turn left. Make a left on Hunters Run Drive to Clubhouse on the right.

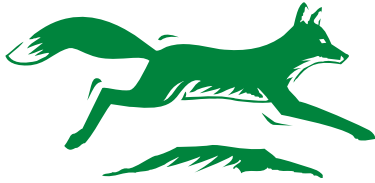


An affordable, convenient family community
Hunters Run is a family community with plenty of room to play. All ages will enjoy the community clubhouse and activities room, the community pool, picnic area and the adjacent Hunters Run Park. Laundry facilities are located on site and a quality day care/nursery school is close by.
The professional management at Hunters Run is available 24 hours a day to address any problems or concerns you may have. You'll find that they, too, are very much a part of this community...one that we hope you'll soon call home.



Raise your standards...

...Not your rent.



HUNTERS RUN

Welcome to Hunters Run...

All the room and comforts you want for a lot less than you'd expect!

Perhaps you've been looking for a nicer place to live, a place where neighbors share your family values. But if nothing you like seems to fit your budget, Hunters Run will be a very pleasant surprise.

Designed for families

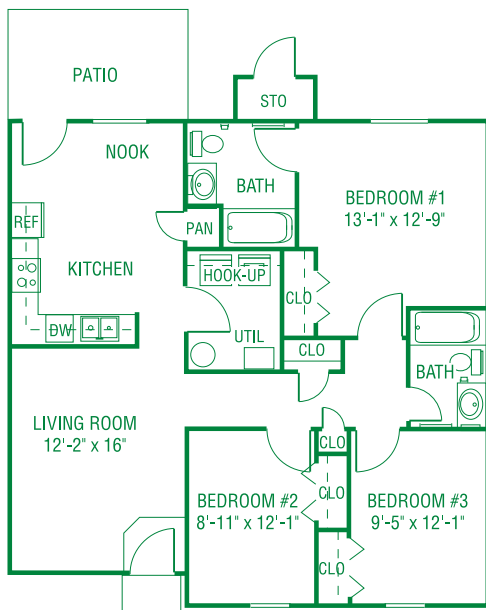
For starters, this community of 3-bedroom ranch and 2 and 3-bedroom townhome apartments is designed with family living in mind—plenty of privacy, plenty of room. At Hunters Run, we care a great deal about how this community is built and managed, and we want our residents to feel the same way.

With convenience in mind

Hunters Run spreads out over 14 acres on the northeast side of Lebanon, adjacent to Hunters Run Park. Families will appreciate the close proximity to schools and shopping including historic downtown Lebanon. Nearby State Route 42 and 48 offer quick access to surrounding Warren County attractions as well as Interstate 71.

And built for lasting value

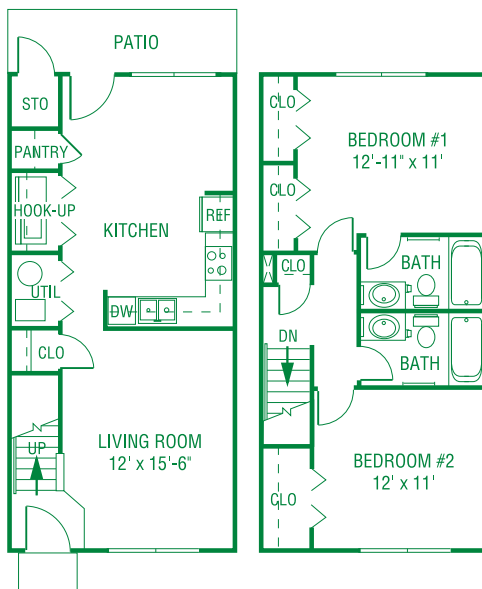
See for yourself the quality of construction, amenities, landscaping and management at Hunters Run—then take a look at the price. You'll find no better rental value for working families anywhere in the Lebanon area.



Three-bedroom Ranch

2 Full Baths, 1,160 sq. ft.

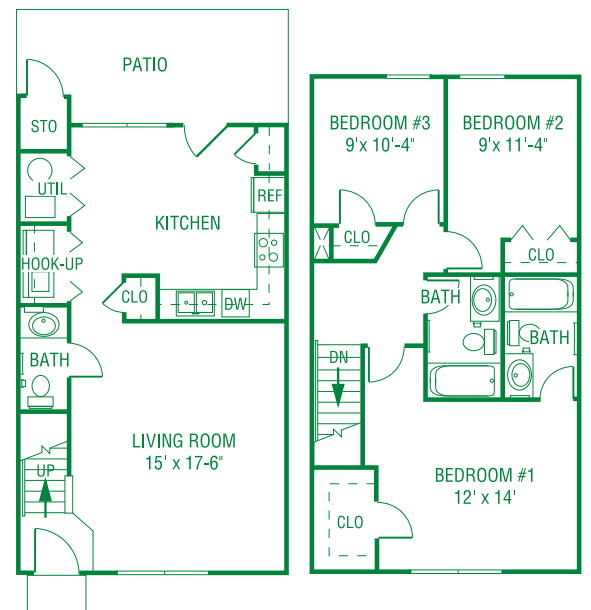
Rent per month: _____



Two-bedroom Townhouse

2 Full Baths, 1,050 sq. ft.

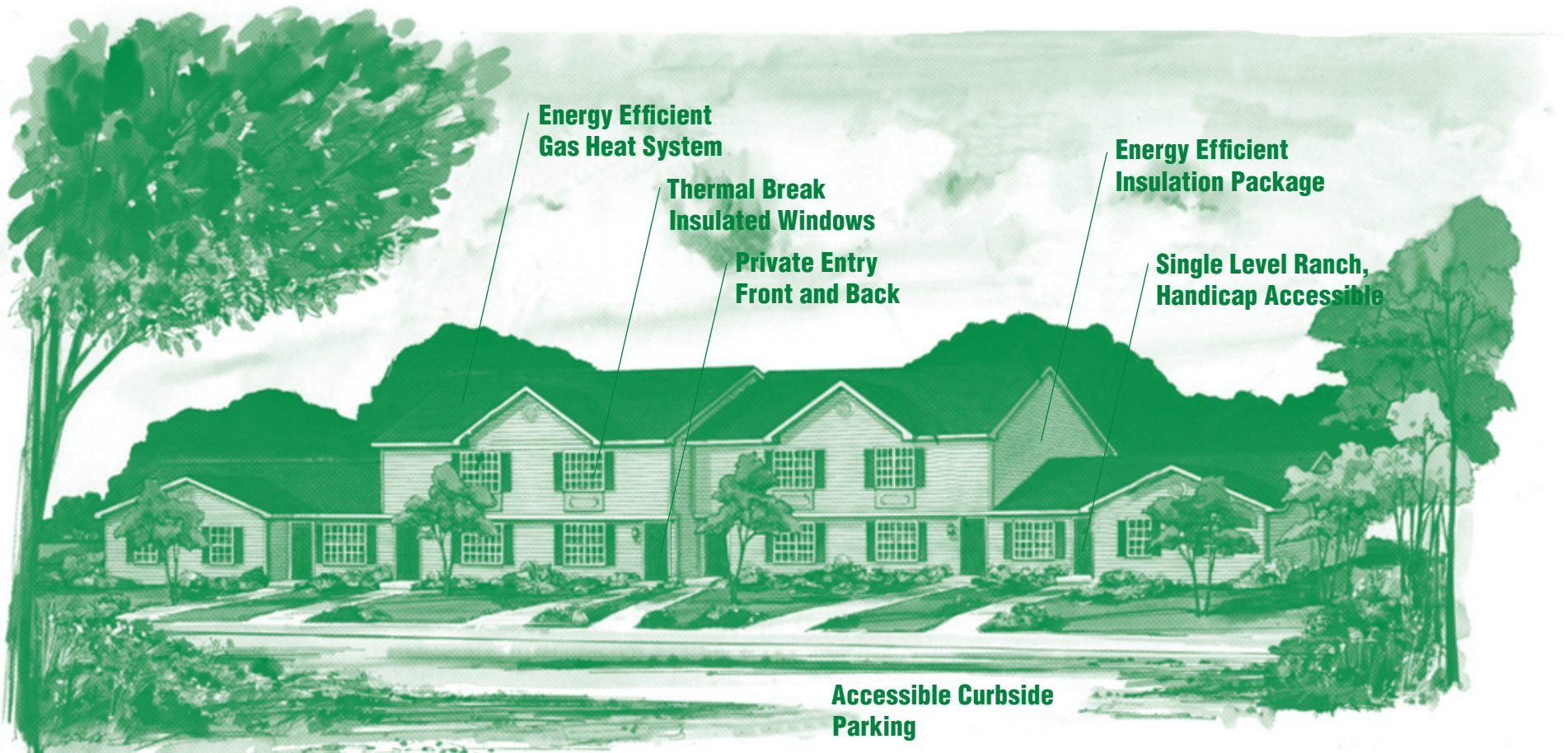
Rent per month: _____



Three-bedroom Townhouse

2½ Baths, 1,250 sq. ft.

Rent per month: _____



Energy Efficient Gas Heat System

Thermal Break Insulated Windows

Private Entry Front and Back

Energy Efficient Insulation Package

Single Level Ranch, Handicap Accessible

Accessible Curbside Parking